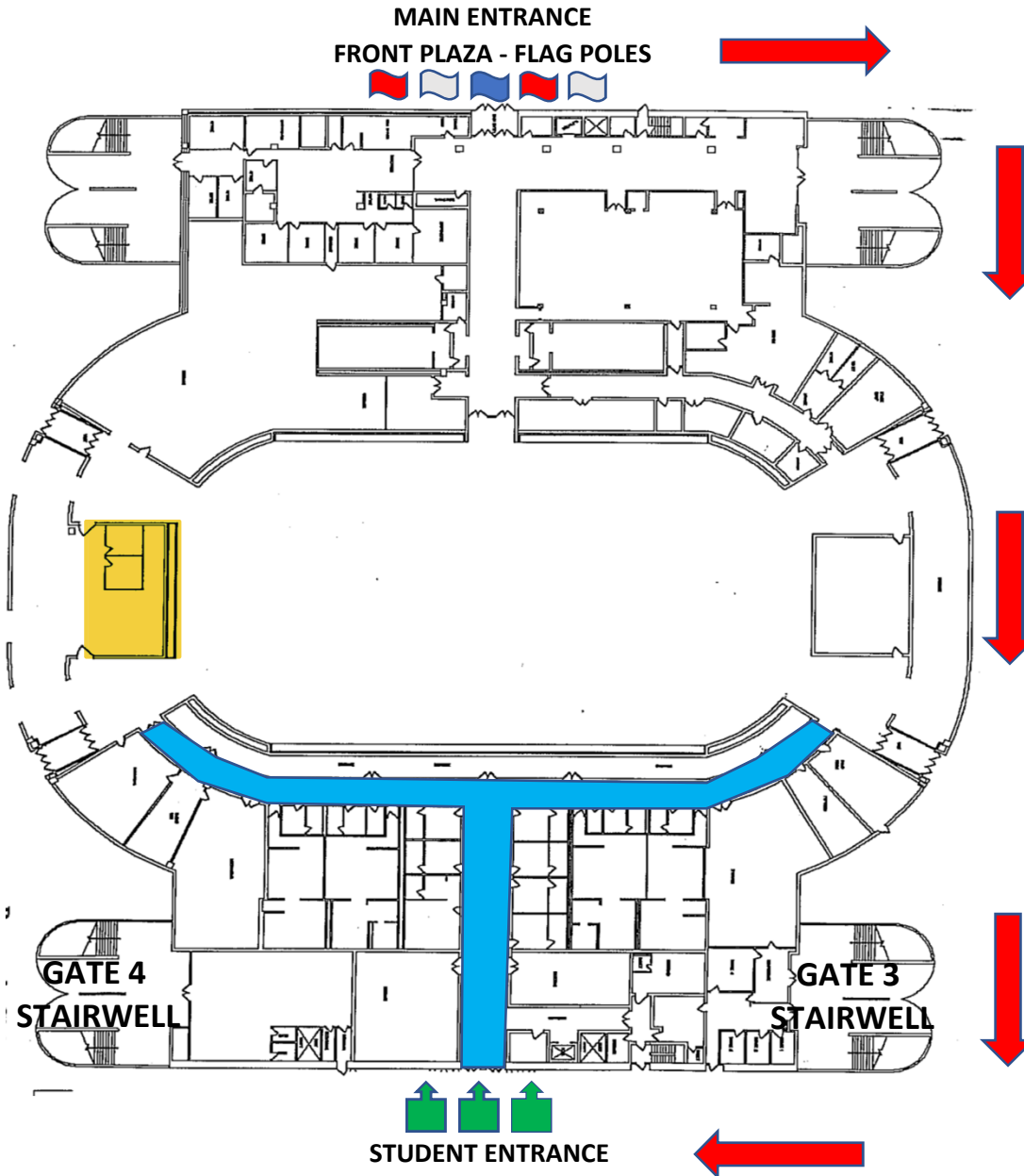






Alcaniz St

E Chase St



-  Students will walk down the North Fire Lane to the back of the building.
-  Student Entrance/Check-In; students must be screened to enter the Bay Center.
-  The blue area is where all grads will be directed to their seats on the floor.
-  The yellow area represents the graduation stage.

Students entering from the back parking lot on 9th Ave may walk down Gate 3 & 4 stairwells.

**Any graduates with ADA needs are encouraged to enter in the front of the building. If a student with ADA needs enters at the back entrance, they may enter through the screening check points at Gate 3 & 4 then take the elevator down to the grad line up hallways.

During **Check-In**, students should make sure that their name card is correct. If a correction is needed, a PSC employee can make the necessary change at the Check-In area. After **Check-In**, a PSC employee will line students up in the blue area by degree type.

In the blue area, a PSC employee will have bobby pins, safety pins, tape, tampons, etc. for students.

E Gregory St St

9th Ave