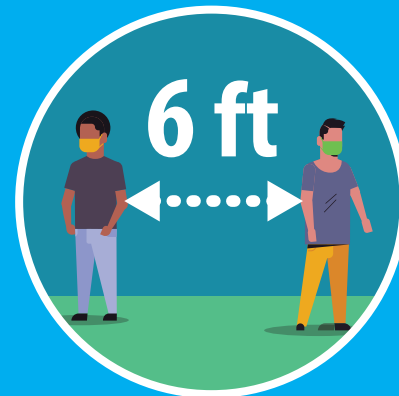


# BACK-TO-COLLEGE TIPS

## Protect Yourself from COVID-19

### Watch your distance

Stay at least 6 feet apart from others, when possible



### Wash your hands

or use hand sanitizer with at least 60% alcohol



### Wear a face cover

in public spaces and common areas



The more **closely** you **interact** with others and the **longer** that **interaction**, the **higher** the **risk** of COVID-19 spread.



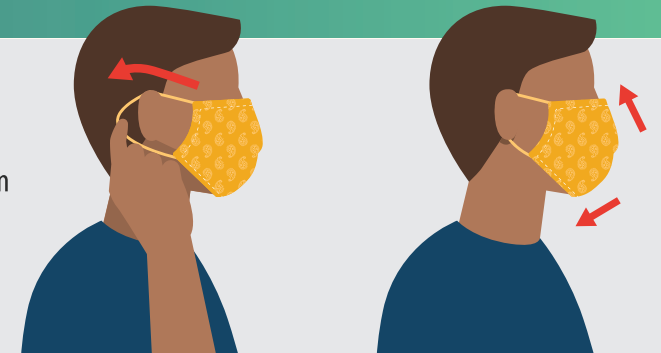
CS 318091-A 07/14/2020

## How to Safely Wear and Take Off a Cloth Face Covering

Accessible: <https://www.cdc.gov/coronavirus/2019-ncov/prevent-getting-sick/diy-cloth-face-coverings.html>

### WEAR YOUR FACE COVERING CORRECTLY

- Wash your hands before putting on your face covering
- Put it over your nose and mouth and secure it under your chin
- Try to fit it snugly against the sides of your face
- Make sure you can breathe easily
- Do not place a mask on a child younger than 2



### USE THE FACE COVERING TO HELP PROTECT OTHERS

- Wear cloth face coverings in public settings and when around people who don't live in your household, especially when other social distancing measures are difficult to maintain
- Don't put the covering around your neck or up on your forehead
- Don't touch the face covering, and, if you do, clean your hands



### FOLLOW EVERYDAY HEALTH HABITS

- Stay at least 6 feet away from others
- Avoid contact with people who are sick
- Wash your hands often, with soap and water, for at least 20 seconds each time
- Use hand sanitizer if soap and water are not available



### TAKE OFF YOUR CLOTH FACE COVERING CAREFULLY, WHEN YOU'RE HOME

- Untie the strings behind your head or stretch the ear loops
- Handle only by the ear loops or ties
- Fold outside corners together
- Place covering in the washing machine
- Wash your hands with soap and water



**Cloth face coverings are not surgical masks or N-95 respirators, both of which should be saved for health care workers and other medical first responders.**

For instructions on making a cloth face covering, see:

[cdc.gov/coronavirus](https://www.cdc.gov/coronavirus)

# WEAR A MASK!

## Protect Yourself and Others.

**COVID-19 CARRIER**  
(without mask)



**RISK OF SPREAD**  
**HIGH**



**HEALTHY PERSON**  
(without mask)

**COVID-19 CARRIER**  
(without mask)



**RISK OF SPREAD**  
**MODERATELY HIGH**



**HEALTHY PERSON**  
(with mask)

**COVID-19 CARRIER**  
(with mask)



**RISK OF SPREAD**  
**LOW**



**HEALTHY PERSON**  
(without mask)

**COVID-19 CARRIER**  
(with mask)



**RISK OF SPREAD**  
**VERY LOW**



**HEALTHY PERSON**  
(with mask)



**PENSACOLA**  
STATE COLLEGE

[PensacolaState.edu/COVID-19](https://PensacolaState.edu/COVID-19)  
850-484-2000



SOCIAL DISTANCE  
**PLEASE STAY 6 FEET APART**  
WHILE WAITING IN LINE!

Marks true distance on the ground.



[PensacolaState.edu/COVID-19](https://PensacolaState.edu/COVID-19)



Please Stay  
**6 Feet** Apart!



Thank You



[PensacolaState.edu/COVID-19](https://PensacolaState.edu/COVID-19)

**FACE COVERINGS  
AND  
SOCIAL  
DISTANCING  
ARE REQUIRED  
IN THIS  
OFFICE!**



**[PensacolaState.edu/COVID-19](https://PensacolaState.edu/COVID-19)**

**FACE COVERINGS  
AND  
SOCIAL  
DISTANCING  
ARE REQUIRED  
IN THIS  
BUILDING!**



**[PensacolaState.edu/COVID-19](https://PensacolaState.edu/COVID-19)**



**PLEASE  
DO NOT  
SIT HERE!**

**Social Distancing Observed**

**ENTRANCE  
ONLY**



**[PensacolaState.edu/COVID-19](https://PensacolaState.edu/COVID-19)**

**EXIT ONLY**



**[PensacolaState.edu/COVID-19](https://PensacolaState.edu/COVID-19)**

# **DISINFECTANT STATION**

**Please Clean Your Desk  
Upon Entering  
the Classroom!**

**[PensacolaState.edu/COVID-19](https://PensacolaState.edu/COVID-19)**

**DO NOT  
ENTER**



**[PensacolaState.edu/COVID-19](https://PensacolaState.edu/COVID-19)**

# FACULTY ONLY



[PensacolaState.edu/COVID-19](https://PensacolaState.edu/COVID-19)

**FACULTY  
& STAFF  
ONLY**



**[PensacolaState.edu/COVID-19](https://PensacolaState.edu/COVID-19)**

**PLEASE SIT HERE**

**PLEASE SIT HERE**

**PLEASE SIT HERE**

**PLEASE SIT HERE**

**PLEASE SIT HERE**



**SECOND FLOOR  
CLOSED**



**[PensacolaState.edu/COVID-19](https://PensacolaState.edu/COVID-19)**

**LIMIT ONE  
PERSON**



**[PensacolaState.edu/COVID-19](https://PensacolaState.edu/COVID-19)**

# LIMIT TWO PEOPLE



[PensacolaState.edu/COVID-19](https://PensacolaState.edu/COVID-19)

**QUIET  
PLEASE  
CLASS IN SESSION**



**[PensacolaState.edu/COVID-19](https://PensacolaState.edu/COVID-19)**

# NOT IN USE



[PensacolaState.edu/COVID-19](https://PensacolaState.edu/COVID-19)

# ONE WAY TRAFFIC



[PensacolaState.edu/COVID-19](https://PensacolaState.edu/COVID-19)

# ONE WAY TRAFFIC



[PensacolaState.edu/COVID-19](https://PensacolaState.edu/COVID-19)

**EXIT ONLY,  
ENTER AT EITHER  
END OF BUILDING**



**[PensacolaState.edu/COVID-19](https://PensacolaState.edu/COVID-19)**